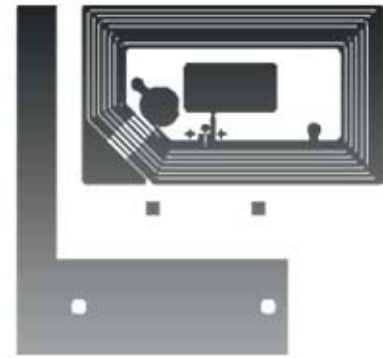


## RFID Inlay 38x22,5mm

ISO 14443 / 15693

- Reliable and secure inlay for several form factors
- High volume expertise and high production yield 99+%
- Flexible antenna carrier material



<b>Applications</b>	<b>Access Control</b>	Key fob, wristband
	<b>ePayment</b>	Key fob, wristband
	<b>Asset Management</b>	Library

### Specifications

<b>Product thickness</b> with IC	approx. 300µm	<b>Integrated Circuit</b>	NXP Mifare Family NXP SLI, SLI-S, SLI-L Infineon My-d Family, TI
<b>Substrate</b>	PET, transparent		
<b>Antenna</b>	Aluminium		(Chip alternatives upon request)
<b>Operating frequency</b>	13,56MHz	<b>Delivery form</b>	Roll format with 48mm web width
			(Other formats upon request)

### Features and Options

For further information please contact the KSW Sales or Customer Service Team:  
E-Mail: [sales@ksw-microtec.de](mailto:sales@ksw-microtec.de) | Web: [www.ksw-microtec.de](http://www.ksw-microtec.de) | Phone.: +49 351 88 960 10