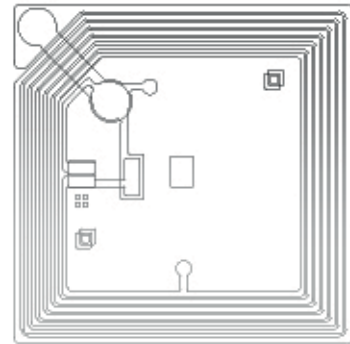


RFID Inlay 45x45mm

ISO 14443 / 15693

- Reliable and secure inlay for several form factors
- High volume expertise and high production yield 99+%
- Flexible antenna carrier material



Applications

eTicketing

Public transportation
(e.g. daily and season tickets)

Asset Management

Library, Item level tracking

Specifications

Product thickness with IC

approx. 260µm

Integrated Circuit

NXP Mifare Family
NXP SLI, SLI-S, SLI-L
TI-HF-I Standard

Substrate

PET, transparent

Antenna

Aluminium

(Chip alternatives upon request)

Operating frequency

13,56MHz

Delivery form

Roll format with
52mm web width

(Other formats upon request)

Features and Options

For further Information please contact the KSW Sales or Customer Service Team:
E-Mail: sales@ksw-microtec.de | Web: www.ksw-microtec.de | Phone.: +49 351 88 960 10