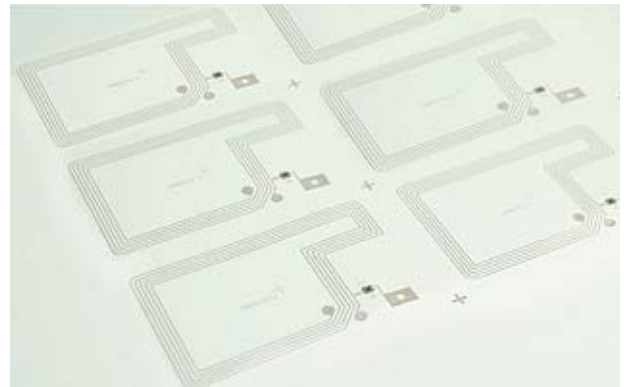


PVC Prelaminate

ISO 14443

- High card surface quality without dents and dimples and good printability
- Based on Flip-Chip technology with KSW Palladium Bumping
- Consistent reproducible antenna geometries and read range



Applications

ePayment:	eBanking, credit and debit cards, loyalty programs, prepaid card, gift card
Access Control:	Traffic control systems, corporate parking lots, car rental parks, premises access, ski access, events
eTicketing:	Public transportation (e.g. season tickets)

Specifications

Product thickness	approx. 390µm	Integrated Circuit	NXP Mifare family NXP P3SR009 FastPay Infineon NRG
Substrate	PVC, white		
Antenna	conductive silver ink		(Chip alternatives upon request)
Operating frequency	13,56MHz	Delivery form	all common card industry formats max. sheet format 56up

Features and Options

MasterCard® approved: with NXP P3SR009 FastPay

For further Information please contact the KSW Sales or Customer Service Team:
E-Mail: sales@ksw-microtec.de | Web: www.ksw-microtec.de | Phone.: +49 351 88 960 10