

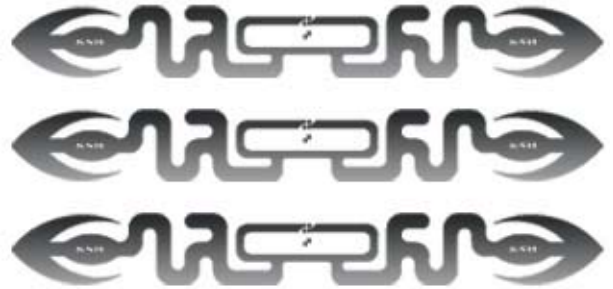
# PRODUCT INFORMATION



## Windshield Inlay 84x10mm

### ISO 18000-6c

- Best, consistent read range on glass used for vehicles
- Durable construction, excellent performance in a small windshield label
- Withstand harsh environmental conditions



#### Applications

##### Access Control

Traffic control, corporate parking lots, car rental parks, premises access

##### Asset Management

Supply chain, item level tracking

#### Specifications

##### Product thickness with IC

approx. 140µm

##### Integrated Circuit

Class 1 Gen 2, Impinj Monza™ 4D

##### Substrate

PET, transparent

##### Antenna

Aluminium

(Chip alternatives upon request)

##### Operating frequency

868Mhz / 915MHz

##### Delivery form

Roll format with 96mm web width

(Other formats upon request)

#### Features and Options

For further information please contact the KSW Sales or Customer Service Team:

E-Mail: [sales@ksw-microtec.de](mailto:sales@ksw-microtec.de) | Web: [www.ksw-microtec.de](http://www.ksw-microtec.de) | Phone.: +49 351 88 960 10

© 2011 KSW Microtec AG, Rev. 04

KSW Microtec AG reserves the right to change its products and services at any time without notice. Recommendations and customer assistance provided by KSW Microtec AG is made to the best of our knowledge. As the field of application and operating conditions of our products are beyond our control KSW Microtec AG does not assume responsibility for damages caused by their usage or our recommendations/ assistance.